



# MONTHLY MEMBERSHIP PROGRESS REPORT

District 2 A1

Results as of: 06/30/2018

GMT: JOE AL PICONE

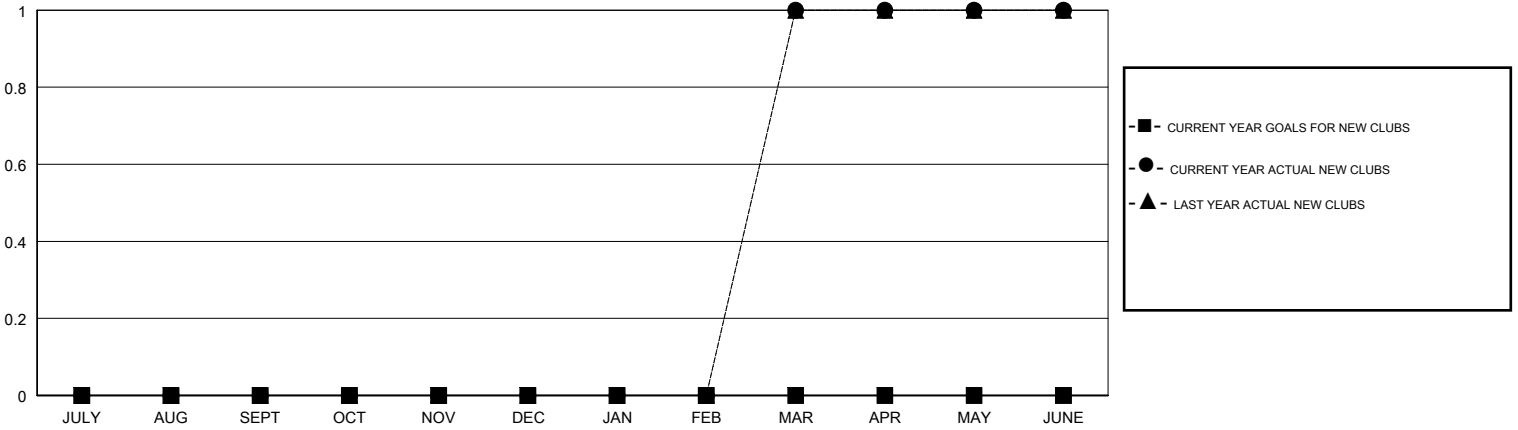
LOCATION TEXAS

GMT CA

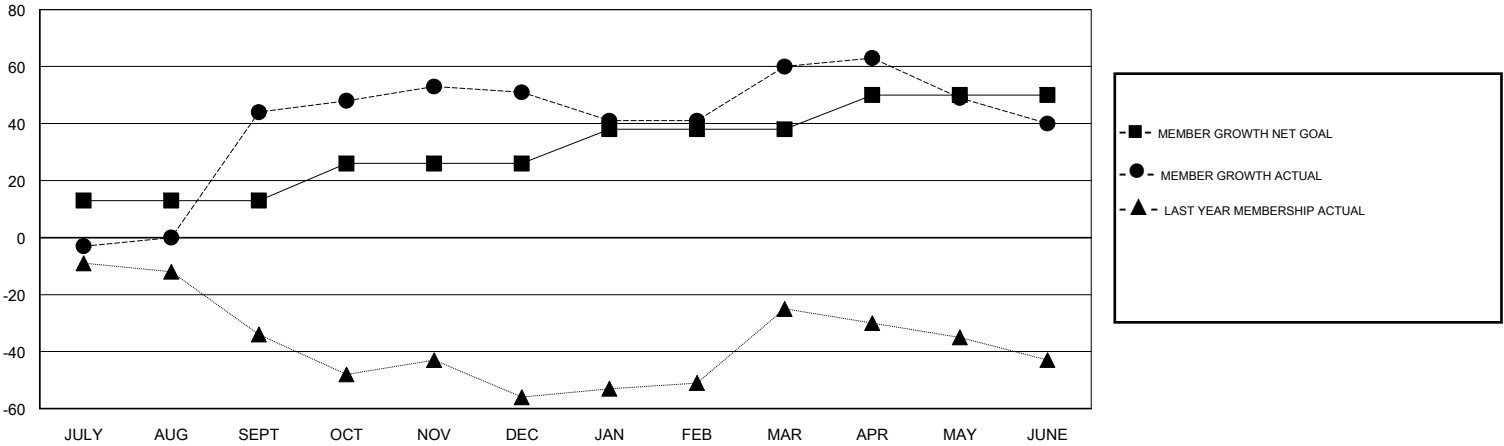
| Clubs                 |               |           |               |
|-----------------------|---------------|-----------|---------------|
| RESULTS FOR 2017-2018 |               |           |               |
| QUARTER               | NEW CLUB GOAL | NEW CLUBS | DROPPED CLUBS |
| JULY/AUG/SEPT         | 0             | 0         | 0             |
| OCT/NOV/DEC           | 0             | 0         | 0             |
| JAN/FEB/MAR           | 0             | 1         | 0             |
| APR/MAY/JUNE          | 0             | 0         | 0             |

| Members               |                        |                      |  |
|-----------------------|------------------------|----------------------|--|
| RESULTS FOR 2017-2018 |                        |                      |  |
| QUARTER               | MEMBER GROWTH NET GOAL | MEMBER GROWTH ACTUAL | DROPPED MEMBERS ACTUAL (including transfers) |
| JULY/AUG/SEPT         | 13                     | 79                   | 32   |
| OCT/NOV/DEC           | 13                     | 55                   | 46   |
| JAN/FEB/MAR           | 12                     | 75                   | 60   |
| APR/MAY/JUNE          | 12                     | 75                   | 92   |

GOALS AND ACTUAL NEW CLUBS CUMULATIVE



GOALS AND ACTUAL MEMBERS CUMULATIVE



|                  |  |  |              |
|------------------|--|--|--------------|
| DROPPED CLUBS: 0 | 36 CLUBS OF 50 ADDED 1 OR MORE NEW MEMBERS | <u>GENDER DISTRIBUTION</u>             |              |
| DROPPED MEMBERS  |  | MALE                                   | 892 (65.73%) |
| DECEASED         | 24   | FEMALE                                 | 465 (34.27%) |
| CLUB CANCELLED   | 0  | Women Percentage Fiscal Year Goal: 30% |              |
| OTHER            | 206  | TOTAL FAMILY UNIT MEMBERS              | 0            |
| TOTAL            | 230  | FAMILY MEMBERS PAYING HALF DUES        | 0            |

[CLICK HERE FOR CUMULATIVE MEMBERSHIP DATA](#)